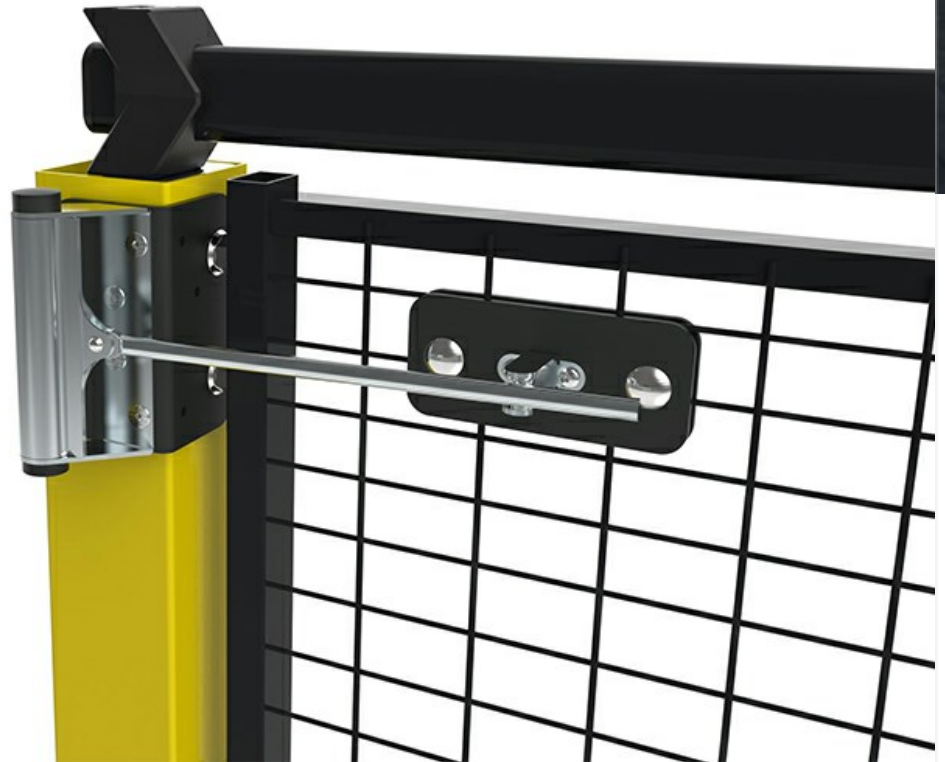


Door closer

The X-Guard automatic door closer provides controlled closing for hinged doors in machine guarding systems. With reversible fittings, it fits both 50x50 mm and 70x70 mm posts. *Must be evaluated when used with an interlock without manual reset due to potential safety risks.*



The X-Guard automatic door closer is designed to enhance industrial safety by ensuring secure and controlled door closure within machine guarding systems. Suitable for hinged doors, it prevents doors from being left open unintentionally, improving access control and workplace security.

Mounting the bracket is simple and efficient, with a reversible design that allows installation on both 50x50 mm and 70x70 mm posts. This flexibility ensures compatibility with various X-Guard configurations while maintaining a reliable and stable fit. The included fittings make installation straightforward, minimizing setup time.

Caution: When used with an interlock without manual reset, automatic door closers present potential risks. Each installation must be individually evaluated to ensure compliance with safety regulations and prevent unintended consequences.

The X-Guard automatic door closer is a durable and effective addition to machine guarding and locking systems, providing a seamless and secure solution for controlled door movement in industrial environments.

Models

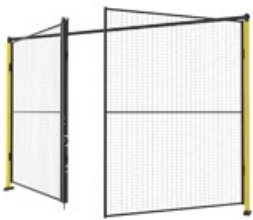
ARTICLES / DESCRIPTION



T01-27

Automatic door closer, X-Guard hinge door

Related products



DOORS

Double hinge door

The X-Guard double hinge door is a practical and cost-effective solution for machine safety, ideal for transporting wide goods. With customizable widths and heights, easy installation, and compatib...

[13 articles](#)



DOORS

Single hinge door

The single hinge door is a practical and cost-effective choice for machine safety, serving as an access point or emergency exit. With a simple design, easy installation, and customizable lock optio...

[9 articles](#)
